



ManageEngine

a division of Zoho Corp.



IT Management, Simplified!





ManageEngine 
RMM Central

Remote Monitoring and Management solution



Why

What

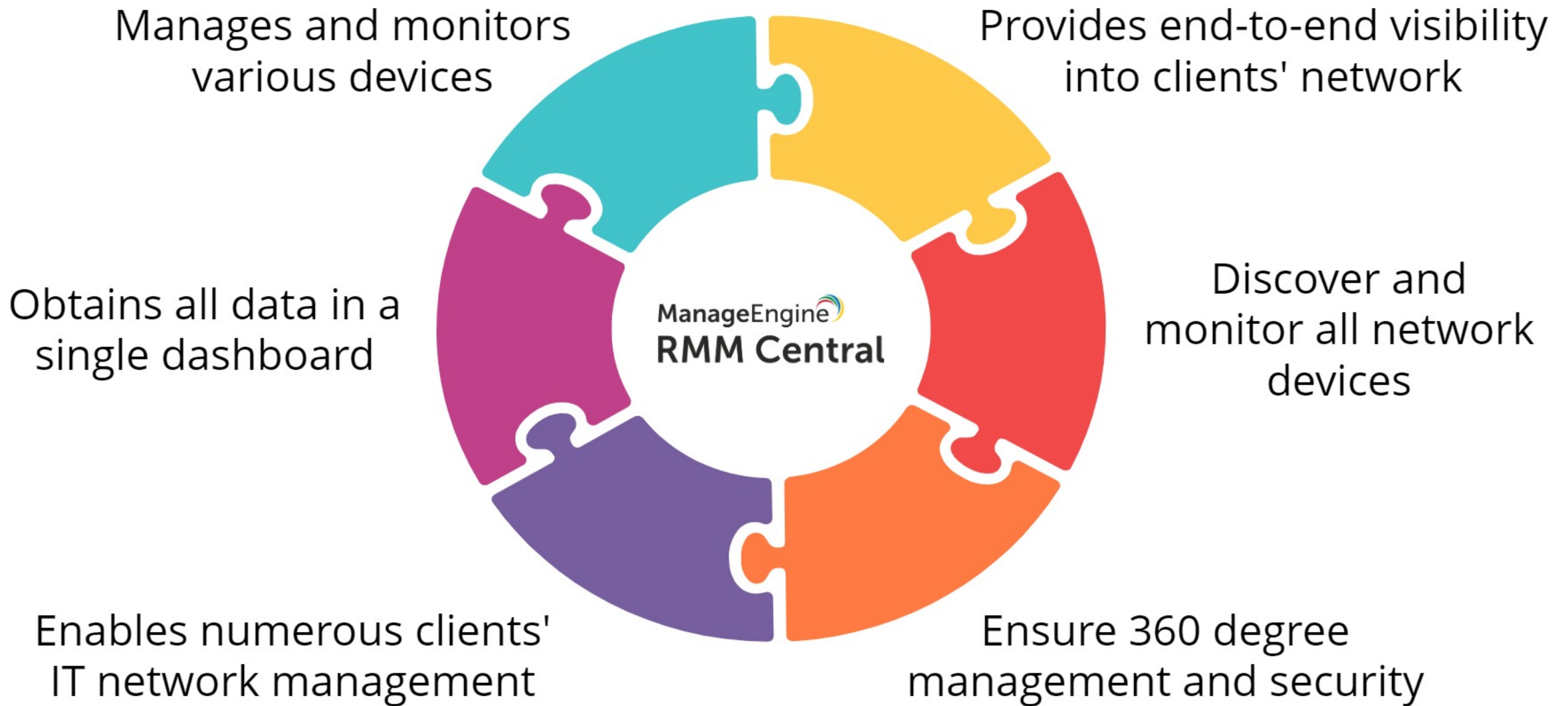
of

How

ManageEngine 
RMM Central



What is **RMM Central**



Why choose **RMM Central**



**Has discovering new networks
become a part of your daily routine?**



Network discovery & management

- ◆◆ Network health monitoring
- ◆◆ Discover devices, push configuration changes, and perform Level 1 troubleshooting tasks across all client sites.
- ◆◆ Push software updates and licenses to all probes in the client sites.
- ◆◆ Live dashboards & graphs with up to 1 minute granularity
- ◆◆ Interface availability & bandwidth monitoring





**Investing painstaking efforts for
monitoring servers in your client
networks?**

Server Management

- ◆◆ Monitors over 300 server performance metrics
- ◆◆ Supports VMware, Hyper-V, Citrix Xen servers & Nutanix HCI
- ◆◆ Capacity planning & resource allocation
- ◆◆ Setting up suitable performance baselines, and monitoring intervals and violation thresholds for each performance metric of the network.
- ◆◆ Monitoring critical event IDs among all network activity data





**Need to update patches all the time
to secure your clients' network?**

Patch Management

- ◆◆ Automate patching for Windows, Mac, Linux, and third-party apps.
- ◆◆ Proactively detect and deplaoy missing patches.
- ◆◆ Test and approve patches before deployment to mitigate security risks.
- ◆◆ Deploy critical zero-day patches.
- ◆◆ Disable auto-updates and decline patches as needed





**Need to spend most of the day
troubleshooting devices and taking
remote access?**

Remote Access

- ❖ Leverage secure remote control to meet various compliance regulations, including HIPAA and PCI DSS.
- ❖ Troubleshoot remote desktops seamlessly with collaboration between multiple users.
- ❖ Integrated video, call, chat; and options for transferring files between machines.
- ❖ Record entire remote control sessions for auditing purposes.
- ❖ Lock end users' keyboards and mice, and black-out their screens to ensure confidentiality during remote sessions.



Juggling numerous hardware and software assets of all customers?

Asset Management

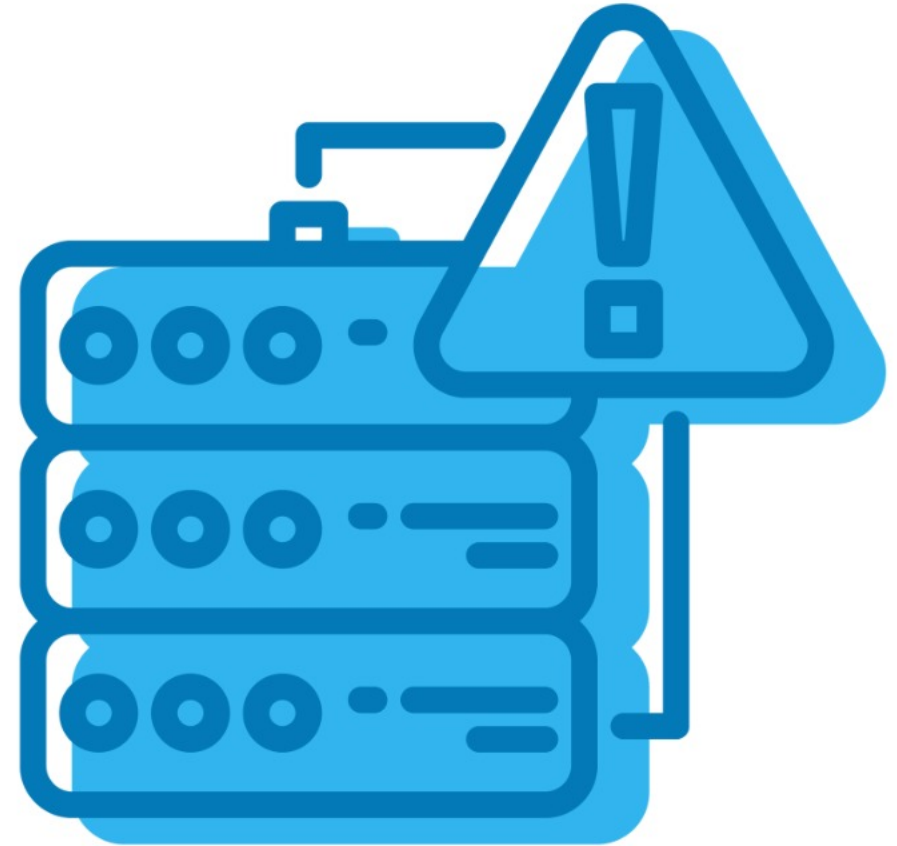
- ◆◆ Track all hardware and software in your network live.
- ◆◆ Ensure software license compliance.
- ◆◆ Block executables and uninstall prohibited software.
- ◆◆ Analyze software usage statistics and reduce costs associated with unused software using software metering.
- ◆◆ Receive notifications for specific events such as detection of new software, non-compliance due to under-licensing, and prohibited software




**Find yourself at odds with
detecting faults in the network?**

Fault Management

- ◆ Proactive fault detection
- ◆ Fault isolation
- ◆ Alarm acknowledgement, suppression, and escalation
- ◆ Alarm notification profiles





**Never been able to comprehend
volumes of data when asked to do
so?**



Reports

- ◆◆ User Reports
- ◆◆ System Reports
- ◆◆ GPO Reports
- ◆◆ Patch Reports
- ◆◆ Inventory Reports
- ◆◆ Health and Performance Reports
- ◆◆ Interface Reports
- ◆◆ Business view Reports

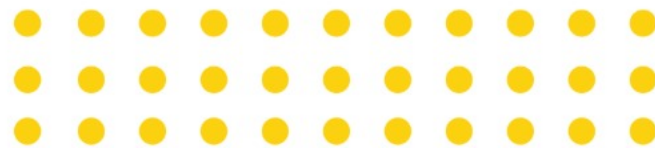
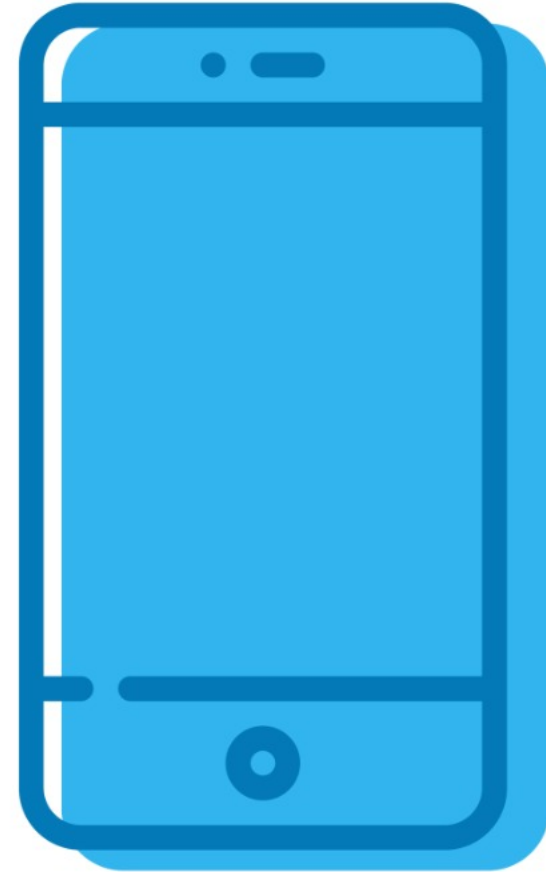




**Do your customers have numerous
mobile devices in their network?**

Mobile Device Management

- ◆◆ Mobile application management
- ◆◆ Mobile security management
- ◆◆ Profile management
- ◆◆ Containerization
- ◆◆ Kiosk mode
- ◆◆ Device enrollment
- ◆◆ Mobile content management.

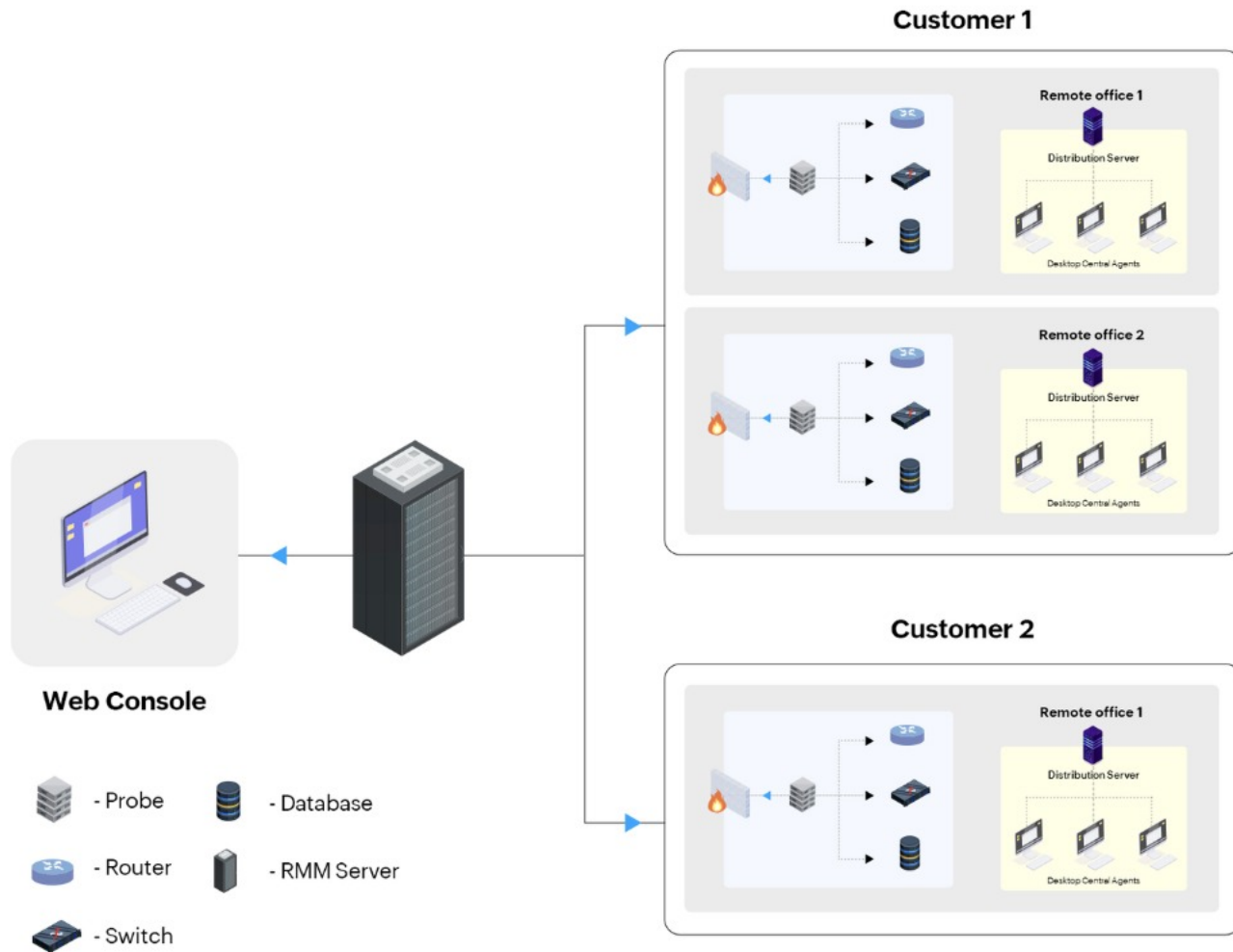




How to setup **RMM Central**



RMM Central Architecture



Components

- ◆ RMM Server
- ◆ Probe
- ◆ AD Connector
- ◆ Distribution Server
- ◆ RMM Central agent
- ◆ Notification Server
- ◆ Web Console

Working with RMM Central

- ❖ Install RMM Central Server
- ❖ Provide customer details
- ❖ Create customer remote offices
- ❖ Install RMM Central Probe for each remote office
- ❖ Deploy RMM Central agents to all client machines
- ❖ Start monitoring and managing all devices from web console



Summary

Device Monitoring

Routers, switches, firewalls, load balancers, wireless LAN controllers, servers, (VMs), printers, & storage devices.

Device Management

Desktops, laptops, servers, mobile devices, tablets, chromebooks, browsers & point-of-sale devices.

Supported Server OS

Windows, Linux, Unix, Solaris, VMware, Hyper-V, Nutanix and Xen server platforms.

Supported OS for management

Windows, Mac, Linux, Android, iOS, tvOS, ChromOS, iPadOS



Edition

RMM Central is available in 3 editions:

- ◆ Trial Edition
- ◆ Free Edition
- ◆ Enterprise Edition

Pricing details

Pricing starts at \$1,195/year for 50 devices

Visit the below page for more details:

<https://store.manageengine.com/remote-monitoring-management/>

Quick Links

<https://www.manageengine.com/remote-monitoring-management/>

System Requirements

<https://www.manageengine.com/remote-monitoring-management/system-requirements.html>

How tos

<https://www.manageengine.com/remote-monitoring-management/how-to.html>

FAQs

<https://www.manageengine.com/remote-monitoring-management/faq.html>

Help documents

<https://www.manageengine.com/remote-monitoring-management/help/index.html>

Knowledge Base

<https://www.manageengine.com/remote-monitoring-management/knowledge-base.html>

