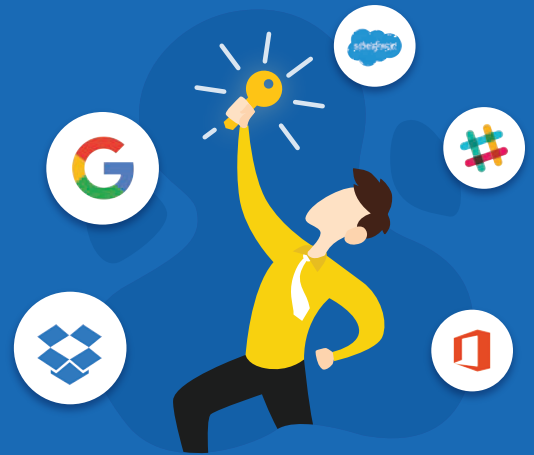
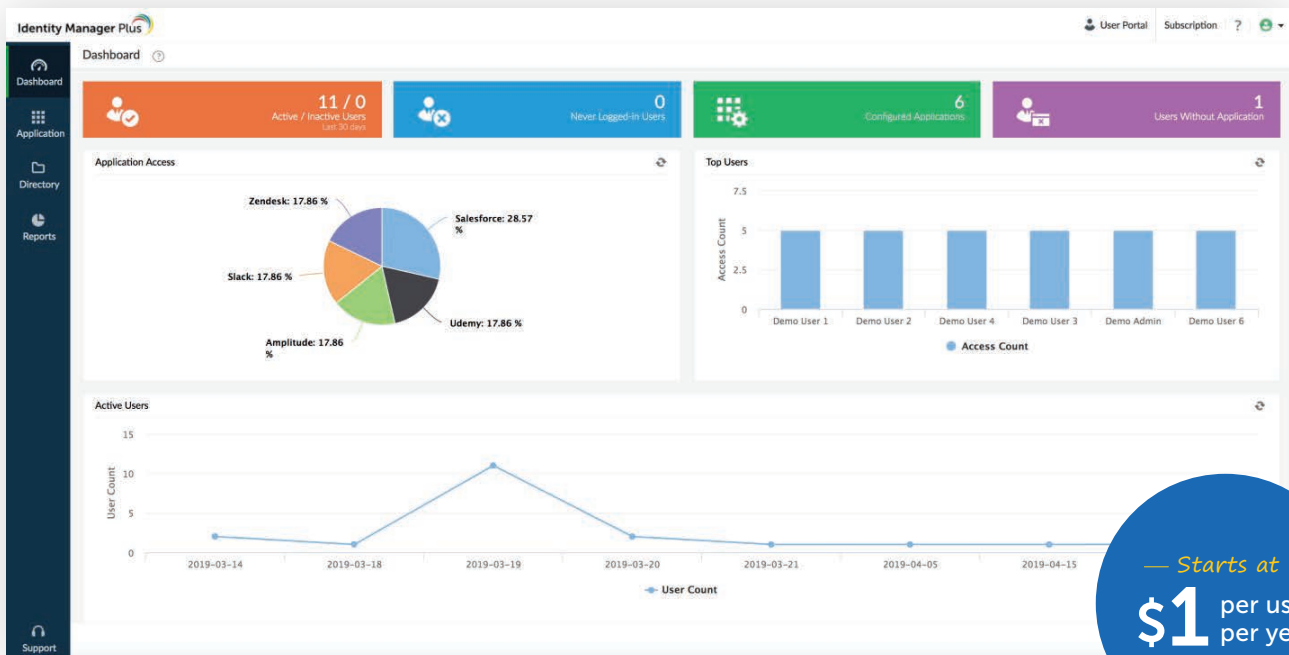


A secure cloud-based, single sign-on solution (SSO) for enterprises



Overview

Identity Manager Plus provides users one-click access to all their applications, allows admins to centrally manage access to applications, and helps the IT team gain visibility into application usage and user accesses. With Identity Manager Plus, enterprises can embrace cloud applications without worrying about employee password fatigue or decentralized management of application access.



— Starts at —
\$1 per user,
per year

Features

- **SSO for enterprise applications:**
Provide users one-click, secure access to enterprise applications. Users only have to log in once to access all their applications from an application dashboard.
- **Support for any SAML-based application:**
Simplify access and gain greater control over access to internal applications that support the SAML protocol by enabling SSO.
- **Built-in reports for deep insights:**
Gain valuable insight into application usage and user accesses. Audit admin activities to keep an eye on changes made to applications and users.
- **Centralized access management:**
Enable SSO for applications, add users, and manage who can access which applications from a centralized console.
- **Leverage existing identities:**
Authenticate users through their existing identities in Azure Active Directory, G Suite Directory, or even their personal email or social media identity.
- **Built-in directory:**
Use the built-in Zoho Directory to store user information; onboard temporary employees and contractors, and provide them secure access to applications.
- **Fully cloud-powered:**
Identity Manager Plus is entirely cloud-based, which means you don't have to worry about infrastructure costs or maintenance. Choose your subscription plan based on current requirements, and then scale as you grow.

Benefits

- Helps fast-track cloud application adoption.
- Improves the user experience by eliminating the need to remember multiple passwords.
- Reduces costly password-related help desk calls.
- Enhances productivity by providing users one-click access to all their applications so they don't have to log in multiple times to access each application.
- Helps admins manage and control access to applications from a centralized console.
- Provides valuable insights into application usage and user accesses.

System requirements

Supported directories:

- Azure Active Directory
- G Suite Directory
- Zoho Directory

Supported browsers:

- Google Chrome
- Mozilla Firefox
- Microsoft Edge
- Internet Explorer 9 and above
- Safari

Contact us:

Website: www.identitymanagerplus.com

Support Email: support@identitymanagerplus.com

Toll-free: +1-844-245-1104