

## Overview

ManageEngine Network Configuration Manager is a comprehensive solution for network configuration and change management (NCCM), supporting various vendors. Its user-friendly interface and advanced automation capabilities streamline configuration management for network administrators, allowing efficient handling of extensive network infrastructures.



## Facts

**4000+**

Trusted by over 4,000 major companies around the globe in different sectors

**15+**

15 years plus years of experience in managing and transforming network infrastructure

**120+**

Used across over 120 countries

**19**

Available in 19 languages

## Scalability facts

Up to **50,000** devices can be handled

More than **6000** device models supported

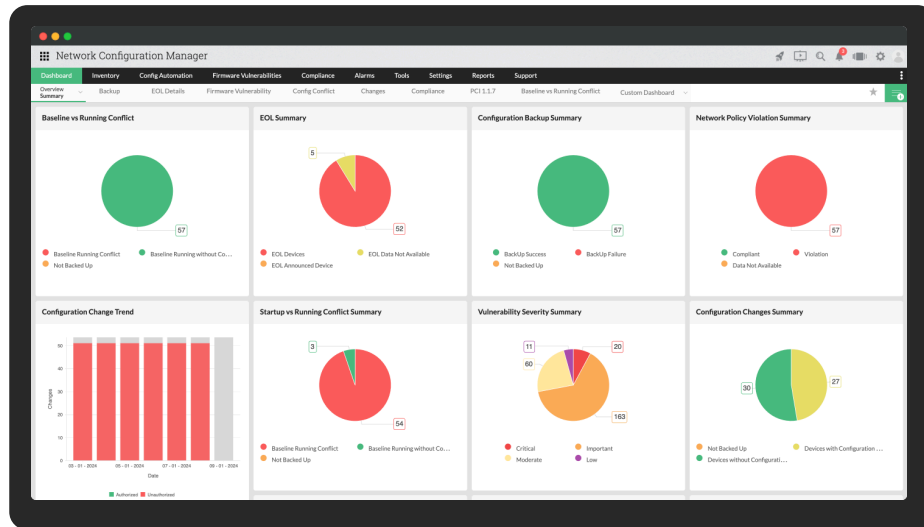
Supports more than **250** device templates

Get **unlimited** device configurations and user packs

## Product benefits

- Attain a swift Return On Investment (ROI) through reduced network administration costs.
- Achieve heightened productivity and scalability with its advanced automation features.
- Enhance security and prevent security loopholes with real-time config tracking.
- Ensure swift disaster recovery in the event of unforeseen disasters.
- Eliminate manual intervention, significantly reducing the occurrence of errors.

# Features and highlights



## Reports/integrations

- Receive real-time reports on various network metrics.
- Choose to schedule a wide range of reports.
- Benefit from the advanced custom report feature.
- Integrate seamlessly with both in-house solutions (OPM and NFA) and third-party solutions (PagerDuty, Password Manager Pro, etc.).

## Vulnerability management

- Immediately access CVE details, complete with severity ratings ranging from Critical to Low.
- Utilize our base score system to assess the impact of each vulnerability.
- Mark CVEs according to their status, ranging from 'Not Applicable' to 'Resolved.'
- Stay well-informed with counters tracking total vulnerabilities, critical threats, and exploitable weaknesses.

## Automation with Configlets

- Streamline routine tasks like enabling/disabling SNMP v3, executing access control lists, troubleshooting commands, etc., in bulk using script templates within minutes.
- Option to group configlets.
- Option to schedule configlets as required
- Support for REST API-based config management

## Configuration backup/restore

- Backup start-up/running configurations.
- Initiate bulk backups, set scheduled backup times, or automate backups upon configuration changes.
- Upload backups to reduce device downtime during outages.
- Configuration backup support with tgz format.

## Change management

- Receive immediate alerts through email, SNMP traps, syslog, or tickets.
- Control user access by implementing role-based access control.
- Compare configurations side-by-side with Diff View.
- Automatically revert to the previous stable configuration with rollback functionality.

## Compliance management

- Adhere to PCI, SOX, and HiPAA policies, which are pre-configured by default.
- Option to enable FIPS compliance mode.
- Easily remediate non-compliance issues.
- Tailor custom policies according to specific requirements.

# System requirements

## Minimum hardware requirements

- 4GB RAM
- 2GHz dual-core or higher
- 100GB of hard disk space

## Recommended hardware requirements

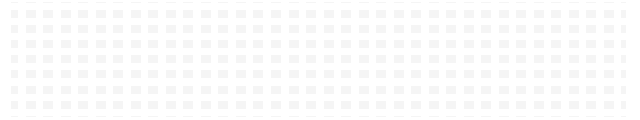
- 16-32GB RAM
- 3GHz quad-core or higher
- 300-500GB of hard disk space

## Software requirements for evaluation

- Windows: Windows 10 (or) Windows Server 2012
- Linux: Debian 10 to 11.6 / Ubuntu 14 to 22.04 / Cent OS 7 / Fedora 37 / Redhat 7 to 9.1 / Opensuse 15.4
- Web client: Chrome/ Firefox/ Edge

To know more about other requirements, click [here](#).

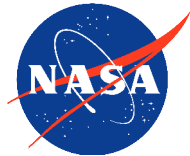
Features	Free Edition	Professional	Enterprise
Starting Price	Free	\$595 (10 devices)	\$8395 (250 devices)
Max Devices Count	2 devices	10,000	50,000
Manage up to 10000 devices	✗	✓	✓
24x5 technical support	✗	✓	✓
Multi-Site / Distributed Network Configuration Management	✗	✗	✓
Automatic data sync between all probes (Multiple sites)	✗	✗	✓
Smart Upgrade - Automatic PPM Upgrade for all probes	✗	✗	✓
Collective data/reports in the central server	✗	✗	✓



ManageEngine Network Configuration Manager has proven a very useful tool to help Federal Signal, Inc. manage multiple vendors equipment across multiple geographic locations. It has allowed us to effectively manage remote device configurations and implement effective change control for network infrastructure.

**-Larry Ware, Federal Signal Global Network Boffin**

## | Trusted customers



**AT&T**



**SIEMENS**

**IBM**

Grab your 30-day free trial

Get a free demo

[Download free trial](#)

[Request for a demo](#)