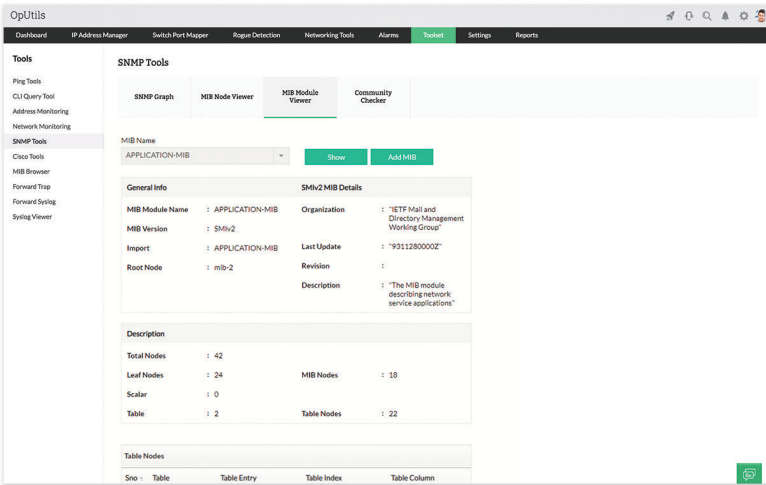


CISCO Tools

Cisco Tools manages the cisco configuration files: Backup, Retrieve, Compare, and Upload. It also scans a subnet/ range of IP addresses to collect the details of the CISCO devices in scanned range.

Diagnostic Tools

Diagnostic tools is a collection of generic utilities, for day to day management of the system and network. The tools can be used to troubleshoot, debug connectivity issues, packet loss and latency issues in a LAN environment.



Customer Success Story



"OpUtils has provided us a detailed and intuitive interface to easily manage our IP space and switch ports. We can easily find any system on our network through their switch port mapper tool and also quickly identify possible security violations."

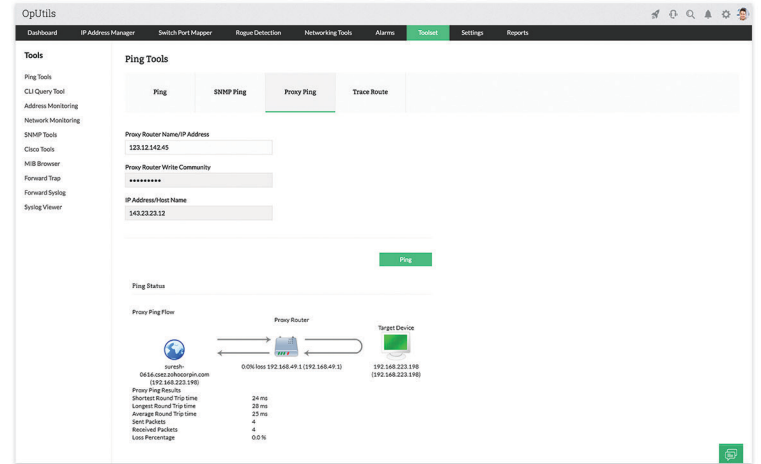
- Nichole K. Boscia, CSC
Sr. Network Engineer
NASA Ames Research Center
Advanced Supercomputing Division

Rogue Device Detection

Tools that OpUtils periodically scans the routers and subnets to detect any new systems/devices found in the network. Initially it lists all the systems/devices discovered in the network. The Administrator has to verify and mark all the valid systems/devices in the network. This tool help to block/unblock unauthorized rogue devices.

Bandwidth Monitoring

Bandwidth Monitor tool provides the real-time network traffic of any SNMP device. It provides the bandwidth usage details both on at interface-level and at the device-level. It uses SNMP to fetch the bandwidth utilization details of a network interface



SNMP Tools

SNMP tools perform basic SNMP operations such as viewing the details of a MIB node, periodically querying the given SNMP device for the specified OID value to plot results in a graph and receive.

Address Monitoring Tools

Address monitoring tools can help in monitoring and managing IP addresses, MAC addresses and DNS names . These tool monitors the DHCP scopes to identify the used and available IP addresses in each scope and also views the TCP connections established in the device.

Trusted By



ManageEngine

ManageEngine (A division of ZOH0 Corp.),
9500, Hopyard Rd, Pleasanton, CA 94588. USA.

Web Site: <http://www.manageengine.com> | For queries on products : sales@manageengine.com
For 24x7 support : oputils-support@manageengine.com | Toll free: +1-888-720-9500