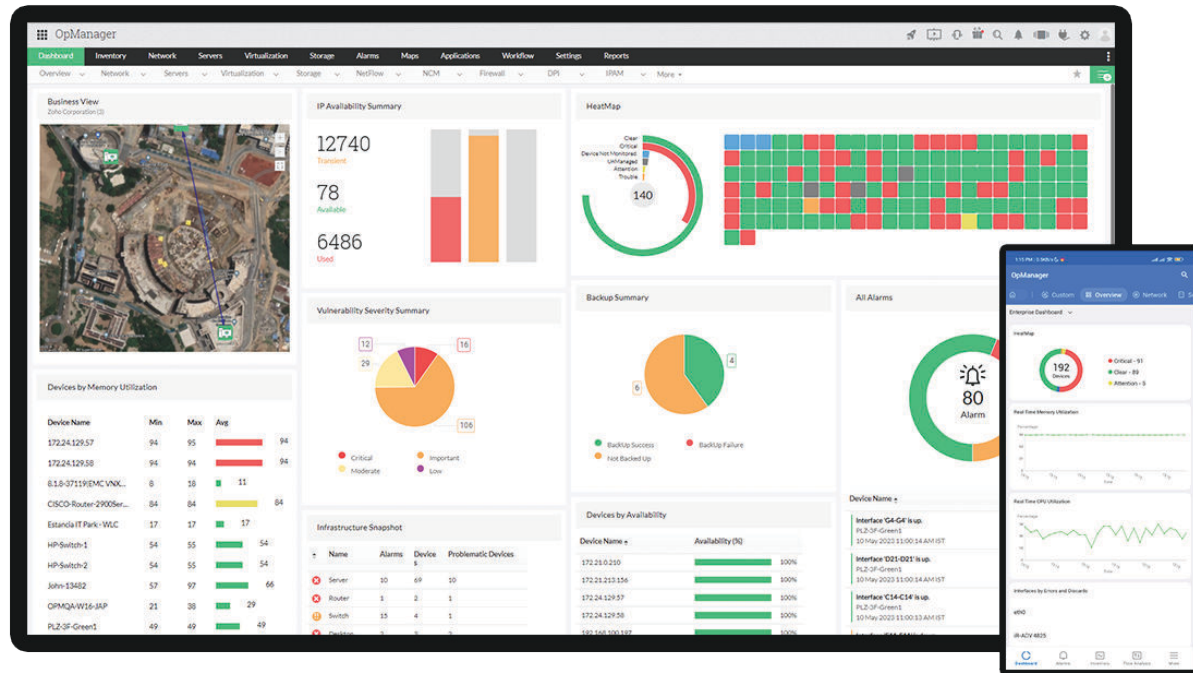


DATASHEET

OpManager



ManageEngine OpManager is an easy-to-use, one-stop enterprise-ready monitoring solution that is trusted by over 1 million IT admins around the globe to ensure maximum network availability.



It gives you in-depth visibility into network health and performance, and enables you to identify issues proactively, automate actions and seamlessly integrate with other applications for enhanced monitoring.

Why choose OpManager?

Comprehensive monitoring

Monitor the availability, health, and performance of your network devices such as switches, routers, servers, interfaces, firewalls, and other networking hardware for close to 3,000 metrics - all within OpManager.

Support for Hybrid Networks

Monitor all your hybrid network components like Microsoft Hyper-V, VMware, Citrix XenServer, Nutanix Infrastructure, Cisco UCS, and other essential applications such as Exchange, Active Directory, services, and processes for faults and performance.

Real time monitoring and Alerts

With a proactive alert-based fault indication system, get updates on critical network failures real time updates on network faults to help you identify performance issues early on. OpManager's multi-channel alerting system, together with integrations and automated workflows help you reduce MTTR.

Interactive Dashboards

Gain visibility into your entire IT infrastructure with real time data on Key Performance Indicators (KPIs) and critical information on a unified interactive dashboard, with over 350 widgets.

Easier Incident Identification

OpManager's color-coded alerts help users understand the severity of the raised alarm or device availability status. Furthermore, users can also set multiple thresholds for different severity, allowing them to prioritize the pressing issues, and resolve them at the earliest.

Detailed Network Visualizations

Visualize and monitor devices present across multiple geographical locations in your organization using custom Business Views, 3D Floor Views, Rack Views, Layer2 Maps, Google/Zoho Maps and VM maps.

Enhanced Fault Notifications

Notify critical network faults to the concerned authority/technicians via text-based SMS, e-Mail, and e-Mail based SMS alerts. For improved fault management, you can also set up alert profiles to be notified about performance issues via Slack channels, trouble tickets, etc. using OpManager's newest integration features.

Intelligent Automations

100+ code-free workflow actions to automate routine tasks based on user-defined conditions for managing services, processes, etc., without complex scripts. A Discovery Rule Engine to streamline IT management by automatically classifying devices, applying templates, and setting custom monitors during discovery.

Enterprise-grade scalability

Monitor and manage up to 30k devices and 50k interfaces out of the box. With a centralized console, monitor multiple remote branch offices in real time. Ensure high availability with failover functionality and secure your network from disruptions 24/7.

Seamless integrations with third-party applications

Expand OpManager's capabilities by integrating with ManageEngine apps like ServiceDesk Plus, AlarmsOne, and Analytics Plus, as well as third-party tools like Jira, ServiceNow, Slack, and Teams. Use REST APIs to transfer data to other platforms, creating a unified IT management strategy.

On the go Monitoring

Monitor your IT in real-time and gain visibility into your IT infrastructure even when you are on the move, with the OpManager iOS and Android mobile applications.

Exclusive features

1. Root cause analysis

OpManager's all new **Root Cause Analysis** enables you to visualize, analyze and correlate IT monitoring data of your devices, interfaces and URLs in a centralized console and accelerates the process of identifying the root cause of network issues.

2. Adaptive Thresholds

OpManager's **Adaptive Thresholds** enables its users to optimize the efficiency of alerts, by dynamically modifying the threshold values for critical monitors using OpManager's machine learning-based predictive algorithms.

3. SNMP v3 monitoring with SHA-2 authentication

With an upgrade to the latest version of OpManager, users can **configure the SHA-2 algorithm** for SNMPv3 authentication to enhance security for network monitoring.

4. Network Path Analysis

OpManager now offers an in-house **Network Path Analysis tool** to visualize and continuously monitor the performance, route pattern and overall history of your network path and helps you identify any communication delays between the source and destination.

5. High Availability Monitoring

Ensure continuous and uninterrupted availability of critical network infrastructure by configuring them for **high availability**. OpManager's supports high availability monitoring for a huge category of devices.

6. Cisco ACI monitoring

Discover your entire Cisco ACI infrastructure and get a comprehensive view of your controller along with all the associated components such as the fabric, tenants, and endpoint groups.

7. Support for Wireless LAN controller monitoring

OpManager's **multi-vendor WLC monitoring** module keeps your network intact by providing in-depth visibility of your wireless LAN controller (WLC), with advanced monitoring of the SSIDs and access points as well.

8. Support for Switch Stack monitoring

OpManager now supports **Cisco switch stack monitoring** for versions 125300 and above. A combined interface with a unified SNMP/CLI view, dedicated reports and personalized alerts is provided for all units in a stack that is discovered in OpManager.

Add-ons & Plug-ins

Apart from just monitoring your network devices, you can now enable the following add-ons to help you monitor application performance, analyze network traffic, track configuration changes, manage firewall policies, IP addresses, and switch ports, all within OpManager.

Applications Manager (Plug-in)

Proactively monitor the performance of your applications across on-premise and cloud environments, gain code-level visibility, drill down to the root cause of issues, and deliver seamless end user experiences - all from a single console.

NetFlow Analyzer (Add-on)

Monitor and analyze bandwidth usage trends to proactively detect anomalies in network traffic patterns, navigate the cause of bottlenecks, and gain real time insights on critical network elements with intuitive reports that quantify who is using your network, how much, and why.

Firewall Analyzer (Add-on)

Protect your network from trojans and malware by monitoring firewall logs, analyzing policy effectiveness, and managing firewall rules for increased network security.

Network Configuration Manager (Add-on)

Track the who, when, and what of network configurations in real-time and ensure your network devices function in a desired state.

IPAM & SPM (Add-on)

Manage your IP space effectively by continuous tracking. Find the available switch ports in real time by mapping occupied ports to corresponding devices. Simplify operations management task with many more troubleshooting tools.

Editions

To better suit your monitoring needs, OpManager is now available in 3 editions.

Standard	Professional	Enterprise
<ul style="list-style-type: none">● Network Discovery● Availability Monitoring● Server, Switch, and Interface Monitoring● SNMP, WMI and CLI Monitoring● Syslog and EventLog Monitoring● File/Folder Monitoring● Script Monitoring● Cisco ACI and Meraki Monitoring● Customizable Dashboard● Business Views● Alarm Escalation● Android/iOS Mobile Applications● Third Party Integrations● Scales up to 1,000 devices● Starts @ 245 USD for 25 devices	<ul style="list-style-type: none">● Everything in Standard Edition, and● Layer 2 Discovery● Discovery Rule Engine● Virtual Environment Monitoring● Agent-Based Monitoring● Hardware Monitoring● VLAN Monitoring● AD, Exchange Server, and MS SQL Monitoring● REST API Access● NOC Views, Widgets● IT Workflow Automation● Forecast Reports● Multi-Language Support● Scales up to 1,000 devices● Starts @ 345 USD for 25 devices	<ul style="list-style-type: none">● Everything in Professional Edition, and● Multi-Site Monitoring● Up to 180 days of data maintenance● Failover Support● Scales up to 10,000 devices out of the box● Supports 50000 interfaces● Starts @ 11,545 USD for 250 devices

Minimum System Requirements

To manage up to 1k devices.

CPU : Intel Xeon 2.5 Ghz, 4 cores/ 8 threads or higher
Ram Size : 16 GB
Hard Disk : 40 GB

OS Windows : OS Windows: Windows 10, Windows 11, Windows Server 2025/ 2022/ 2019/ 2016
OS Linux : Ubuntu 16.04 to 22.04/ Fedora 37/ Red Hat 7 to 9.4/ Opensuse 15.4/ Debian 11 to 11.6/ CentOS Stream 9
Database : SQL 2022 (from build 12.8.452), SQL 2019, SQL 2017, SQL 2016, OpManager bundled PostgreSQL

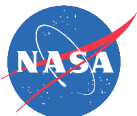
Minimum System Requirements

To manage up to 50k interfaces or 10k devices.

CPU : Intel Xeon 2.5 GHz, 4 cores/ 8 threads or higher
Ram Size : 16 GB
Hard Disk : 60 GB

OS Windows : OS Windows: Windows 10, Windows 11, Windows Server 2025/ 2022/ 2019/ 2016
OS Linux : Ubuntu 16.04 to 22.04/ Fedora 37/ Red Hat 7 to 9.4/ Opensuse 15.4/ Debian 11 to 11.6/ CentOS Stream 9
Database : SQL 2022 (from build 12.8.452), SQL 2019, SQL 2017, SQL 2016, OpManager bundled PostgreSQL

For detailed system requirements, click [here](#).



Telephone Number

Call Toll free : +1 888 720 9500

Alternate number

US:+1 888 791 1189 | Intl:+1 925 924 9500 | Aus: 1800 631 268
UK: 0800 028 6590 | CN:+86 400 660 8680

Mail

opmanager-support@manageengine.com.