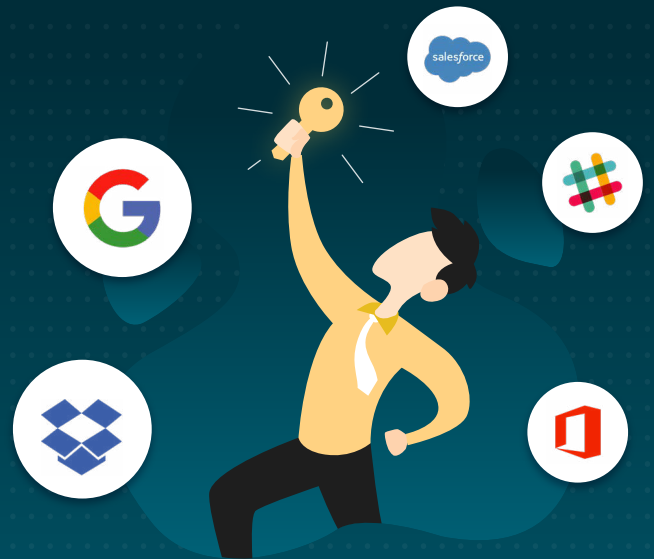


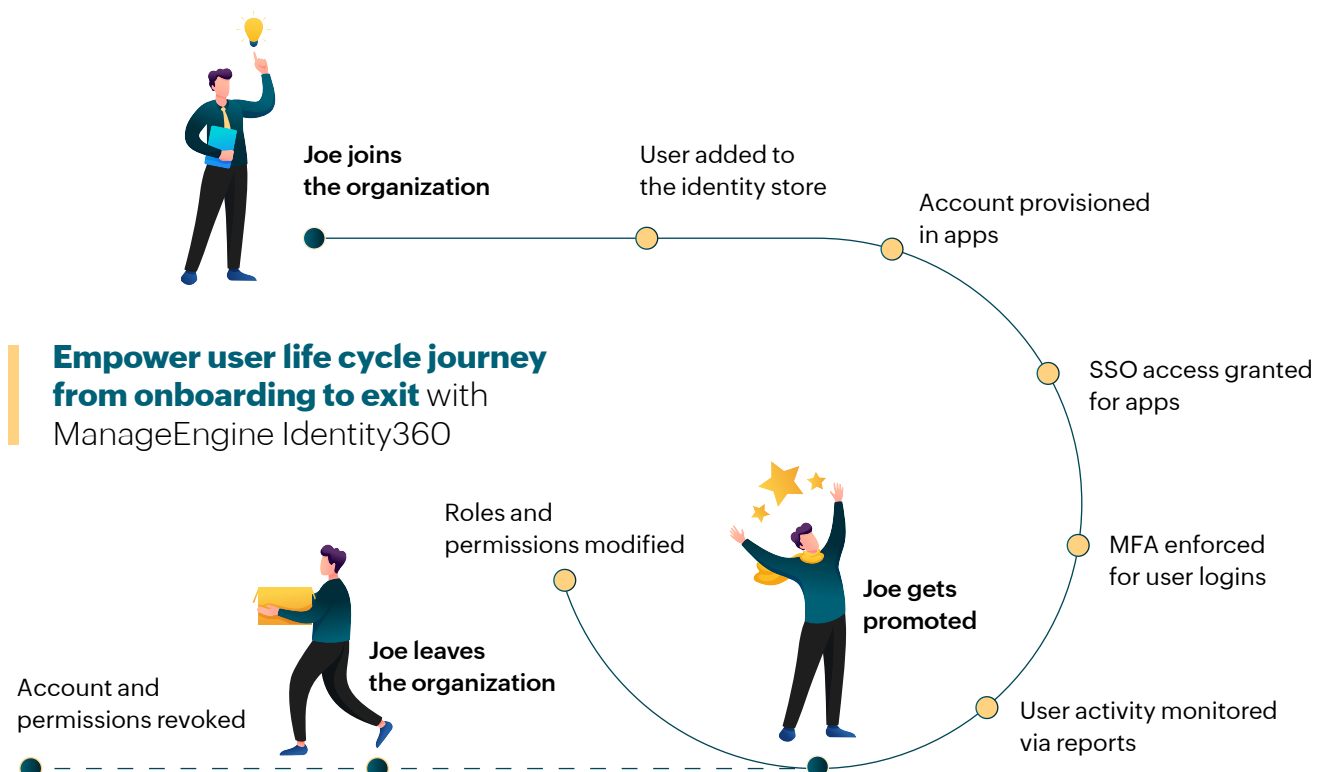
DATASHEET

Simplify identity management and boost security with Identity360






Overview

ManageEngine Identity360 is a cloud-native identity platform that helps enterprises address workforce IAM challenges. Its powerful capabilities include a built-in Universal Directory, identity orchestration, SSO, MFA for enterprise apps and endpoints, role-based access control, detailed reports, and more. It empowers admins to manage identities across directories and their access to enterprise applications from a secure, centralized console. With Identity360, not only can enterprises scale their businesses effortlessly, but they can also ensure compliance and identity-first security.



Identity360 highlights

 Capabilities	 Benefits	 Insights
Evaluate <i>(What we have)</i>	Perform <i>(What you can do)</i>	Control <i>(What you can monitor)</i>
Universal Directory Cloud-native identity store to consolidate identities from different platforms	<ul style="list-style-type: none"> • Simplify identity management • Eliminate identity silos • Accelerate your move to the cloud 	Newly added users and real-time user activity reports with login details
User life cycle management Orchestration capability for your organization's intricate workflows	<ul style="list-style-type: none"> • Automate the entire life cycle from onboarding to offboarding • Use smart templates to auto-populate attribute values during provisioning • Sync changes to multiple directories and applications 	All users report with the ability to perform management actions
Multi-factor authentication Customizable MFA controls across multiple platforms	<ul style="list-style-type: none"> • Secure access to enterprise applications and endpoint logons • Leverage multiple MFA authenticators, including email and SMS verification, Google Authenticator, Duo, FIDO2 passkeys and custom TOTP authenticators • Customize MFA for your organization with fine-grained controls 	MFA audit reports showing user enrollment, MFA login attempts, and protected devices
Single sign-on and passwordless login Reduce login fatigue and simplify application access	<ul style="list-style-type: none"> • Give users one-click access to enterprise applications via SSO • Integrate with applications that support SAML, OAuth, and OIDC protocols, including custom apps • Skip the inconvenience of remembering complex passwords to log into enterprise apps by leveraging passwordless login 	SSO reports with logon count, last logon time, and assigned users for all applications
Delegation The ability to off-load common IT tasks onto technicians	<ul style="list-style-type: none"> • Delegate routine management tasks to non-admin users with zero privilege escalation • Manage (enable or disable) custom technician roles and predefined roles, such as the Admin and Operator 	A technician report showing users who have not logged in over a specified period of time



Benefits

Enhanced security

Restrict access to authorized users and minimize the risk of data breaches.



Increased scalability

Cloud-native Identity360 adapts to your evolving needs, keeping your growing organization secure.



Identity360

Improved visibility

Ensure regulatory compliance by closely monitoring user actions and providing detailed reports.



Cost savings

Automate tasks, cut labor and maintenance costs with cloud architecture, for long-term savings.



Supported directories and applications



and more...

Contact us:

Website: www.manageengine.com/identity360

Support Email: identity360-support@manageengine.com

Toll-free: +1-844-245-1104

Get Quote \$

Sign Up ▶