



A unified access management and identity security solution

for hybrid environments.

www.manageengine.com/ad360



Nine of every ten **Fortune 100** companies
trust **ManageEngine** with their IT.



End-to-end identity lifecycle management

Implement event-driven automation policies that seamlessly execute a sequence of tasks, such as granting or revoking access—both during user provisioning and deprovisioning—across various enterprise applications.



Access certification

Sustain a secure and compliant access management system by regularly reviewing users' and groups' access rights and permissions in AD, Microsoft 365, and NTFS file servers. Receive ML-driven recommendations during provisioning and access reviews to enforce least-privilege access and prevent excess entitlements.



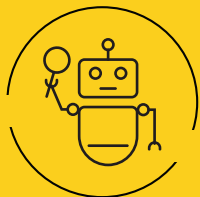
Multi-factor authentication

Step up security without compromising on the user experience. Use biometrics, YubiKey, Google Authenticator, and more to secure access to endpoints (Windows, macOS, and Linux) and enterprise applications. Extend MFA to previously unmanaged local accounts, DMZ assets, and test environments to prevent credential stuffing and persistence attacks.



Single sign-on and password management

Enable secure, one-click access to enterprise applications by implementing single sign-on. Enforce advanced password policy settings for users, sync their passwords across platforms, and empower them to reset passwords on their own.



Real-time auditing with UBA

Detect insider attacks, mitigate threats, and satisfy compliance mandates with user behavior analytics (UBA) powered by machine learning. Get real-time alerts on anomalous logons, privilege escalations, file modifications, and other activities.



Risk exposure management

Analyze and mitigate AD risks by mapping how privileged groups and their members could be exploited in real-world attack scenarios. Visualize attack paths, identify privileged entities, use predefined queries to uncover exposures, understand interconnections through exposure links, and take actionable remediation measures to proactively safeguard targets.



Automation, delegation, and approval workflow

Use prebuilt automation policies or roles to reduce the burden of identity management in Active Directory and Microsoft 365. Roll out an approval workflow to maintain control of delegated tasks to ensure security and compliance.



More than 1,000 predefined reports

With over 1,000 reports, AD360 provides unparalleled intelligence on the state of your IT environment. Find stale accounts, users with expired or weak passwords, privileged accounts, and more in a single click. Simplify compliance reporting and enhance access governance across your enterprise.



Hybrid IAM

AD360 unifies identity governance across on-premises and hybrid environments, including Active Directory, Azure AD, Microsoft 365, Exchange, Teams, SharePoint, Google Workspace, Zoho WorkDrive, etc. Automate provisioning, strengthen security, and simplify compliance in one solution built for hybrid environments.



Interoperability

AD360 ensures seamless interoperability across your IT ecosystem by integrating with HR management systems, ITSM platforms, SIEM solutions, and more. This connectivity streamlines identity management processes, reduces complexity, and enables unified operations across hybrid environments.

AWARDS AND RECOGNITIONS



3 Reasons to choose AD360



Quick deployment

No prerequisites or complicated deployment. Start managing identities in your on-premises, cloud, or hybrid IT environment within minutes.



Component-based licensing model

AD360 has various components that solve different IAM challenges. Pick the components you need, and pay only for what you choose.



Mobile apps

Manage identities, passwords, and much more while on the go with fully loaded Android and iOS mobile apps.

Get in touch with us!

Scan this QR code to schedule personalized demo



Get in touch with us at
ad360-support@manageengine.com